



Ezi-Flow CSV Isolator Bottle Filling Operating Instructions

Follow these instructions when filling a Pharma Process Bottle
from a containment isolator via the Ezi-Flow CSV Active.

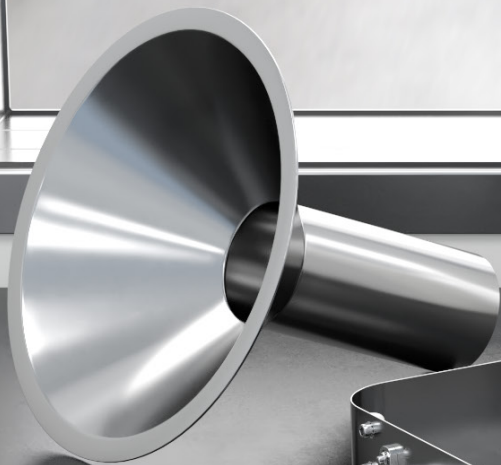


VERSION 1.0
DATE PRODUCED 04/04/22

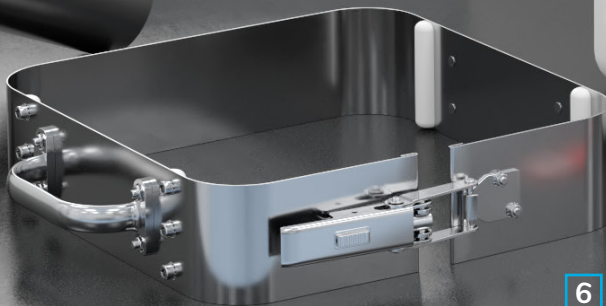
1

- During this procedure
- you will need:

- 1 Pharma process bottle with Flexible Connector Chute and Passive Connection
- 2 Ezi-Flow CSV Active
- 3 Ezi-Grip single-use bag clamp
- 4 Red tamper-evident security tag
- 5 Filling Funnel - either stainless steel or polypropylene
- 6 (Optional) Pharma Process Bottle Lifting Clamp



5



6



1



2



4



3

A detailed 3D rendering of the Ezi-Flow CSV Active mechanism. It is a complex assembly of metal and plastic parts, including a central stainless steel cylinder, various levers, and a blue base. A red component with a stylized 'E' logo is prominent. A blue callout box with a white border and a blue line pointing to a specific part of the mechanism contains the text 'Ezi-Flow CSV Active'. The background is a blurred industrial setting with metallic beams.

Ezi-Flow CSV Active

2:

When the product is ready to be transferred from within the isolator to the Pharma Process Bottle, the operator will need to prepare a Bottle for filling via the Ezi-Flow CSV Active already in place below the isolator bed.

EZI-DOCK SYSTEMS LTD
Ezi-Flow CSV
Isolator Bottle Filling



3:

locate the Pharma process bottle complete with flexible connector chute and passive connection, Red Tamper Evident Safety Tag and Ezi-Grip Single Use Bag Clamp.

Ezi-Flow passive connection

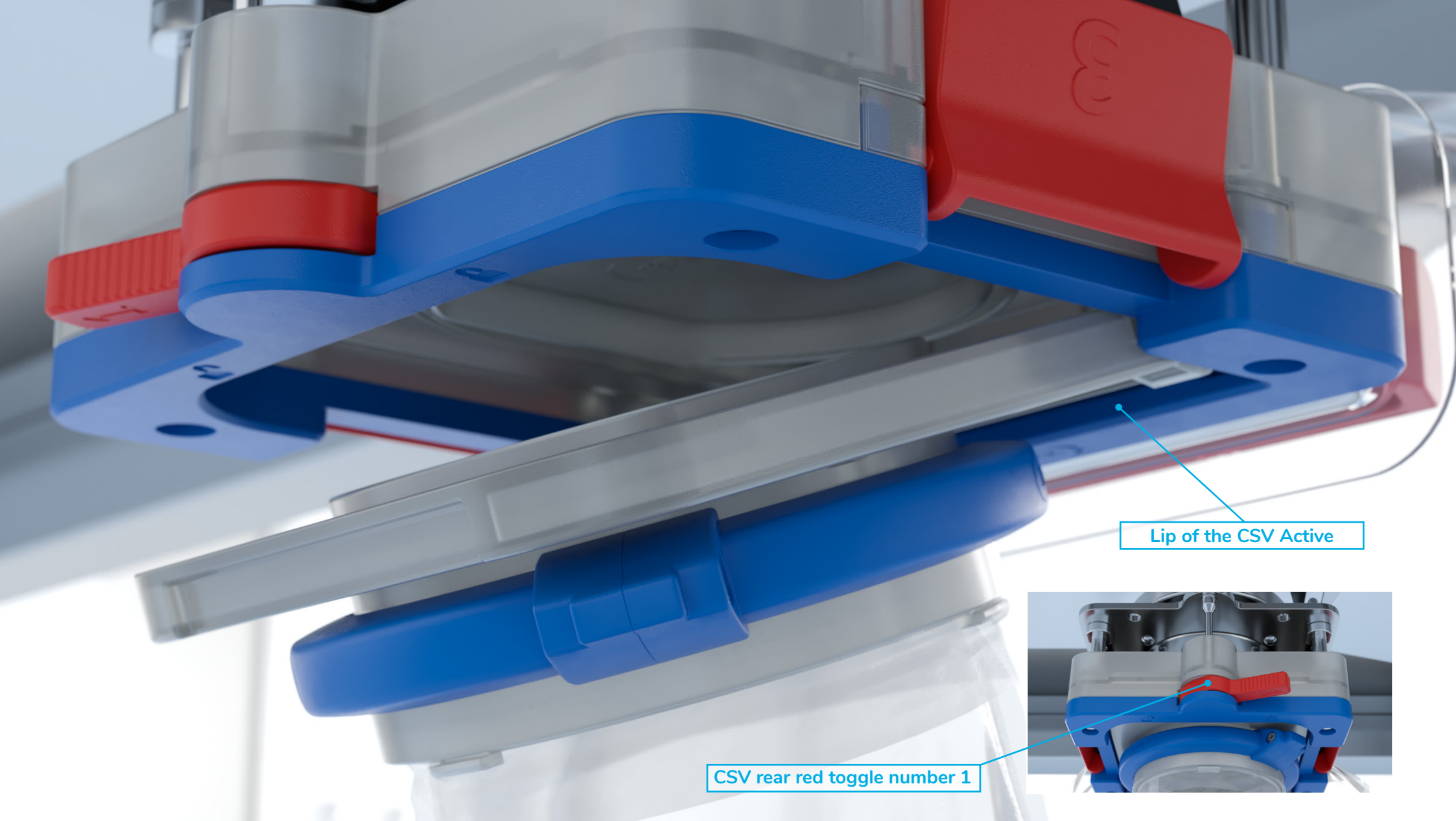
Filling band



4:

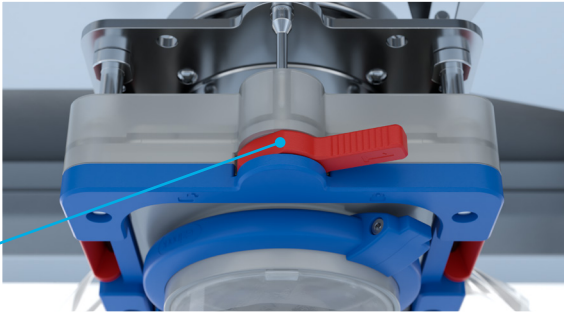
Attached to the Pharma Process Bottle is a flexible connector chute. The flexible connector chute has a blue filling band and above that is the Ezi-Flow passive connection.

EZI-DOCK SYSTEMS LTD
Ezi-Flow CSV
Isolator Bottle Filling



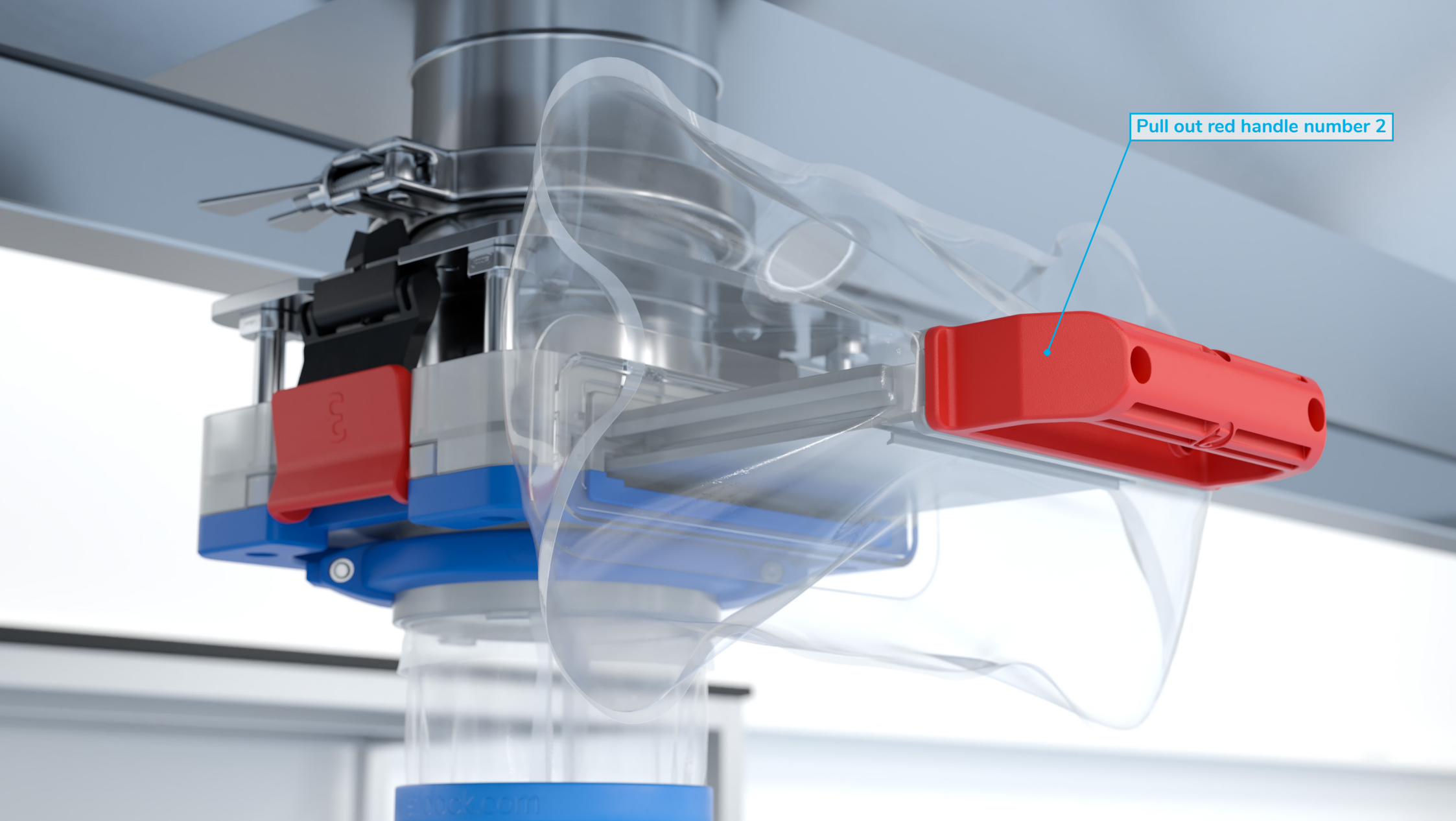
Lip of the CSV Active

CSV rear red toggle number 1



5:

To dock the flexible connector chute and begin the Bottle filling process, slide the front of the passive connection under the lip of the CSV Active, then push the passive connection flat and fully turn the CSV's rear red toggle, marked 1, to release the interlocks.

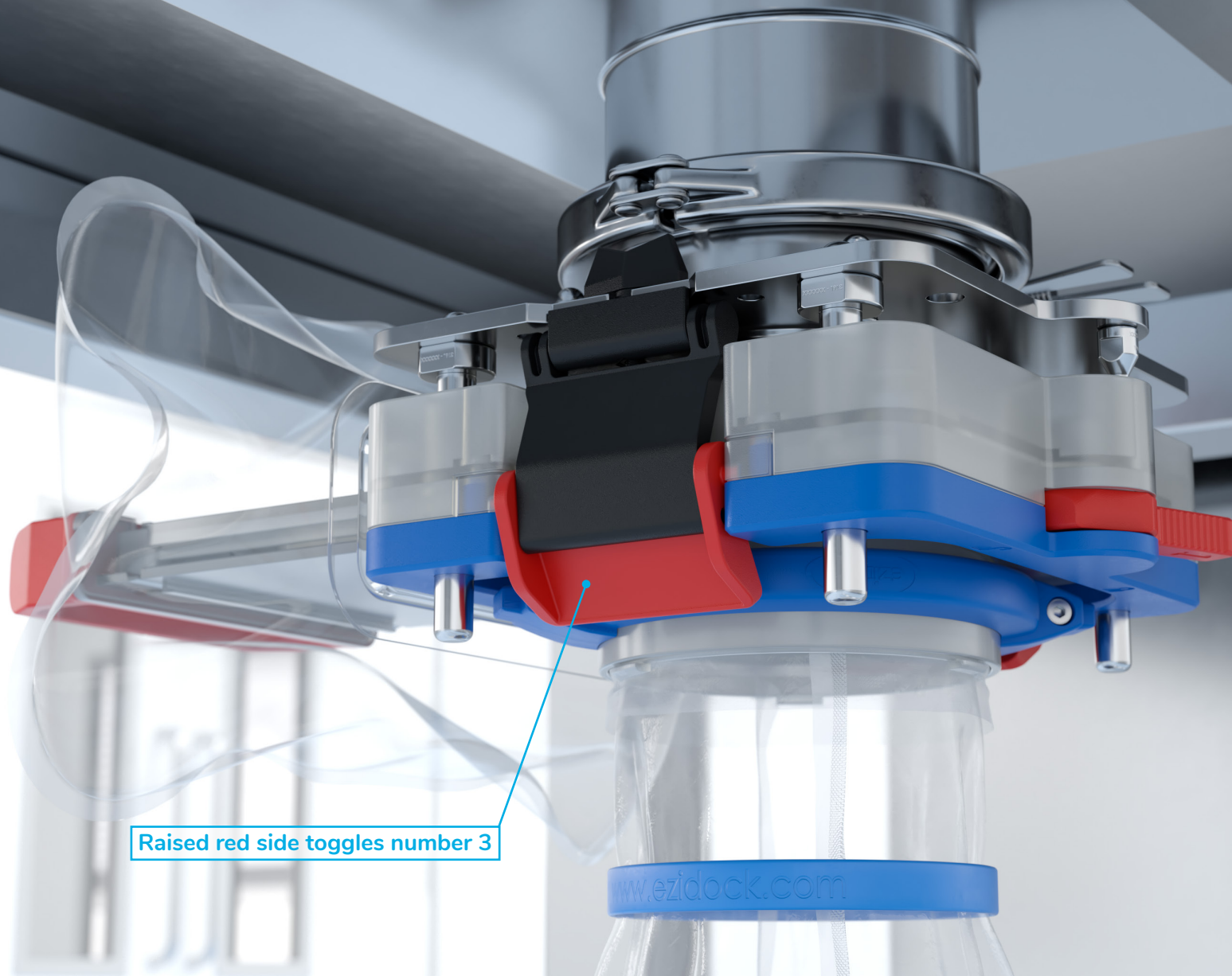


Pull out red handle number 2

6:

The next operation is to pull out the red handle marked number 2.
This operation removes the active and passive sliders.

EZI-DOCK SYSTEMS LTD
Ezi-Flow CSV
Isolator Bottle Filling



Raised red side toggles number 3

7:

At this point there is a void in the system, and so the two red side toggles marked number 3 need to be fully raised. This lowers the active cassette onto the active spigot and creates a contained seal.

EZI-DOCK SYSTEMS LTD
Ezi-Flow CSV
Isolator Bottle Filling



8:

Working within the isolator, first remove the blanking cap and lipped gasket seal which covers the transfer chute.

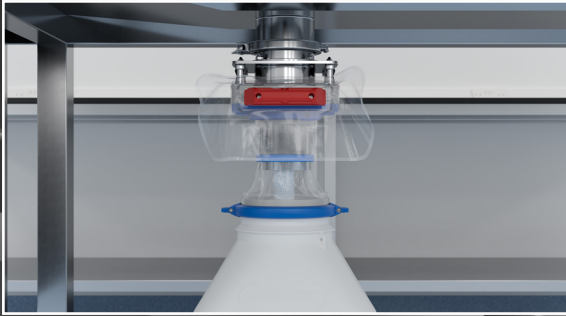
EZI-DOCK SYSTEMS LTD
Ezi-Flow CSV
Isolator Bottle Filling



9:

Now insert the Ezi-Flow conical filling funnel, ensuring the funnel extends fully through the filling band into the flexible connector chute. Ensure the filling band is positioned towards the end of the funnel to maintain a clean area during the filling process.

EZI-DOCK SYSTEMS LTD
Ezi-Flow CSV
Isolator Bottle Filling



10:

The product can now be poured through the funnel/ flexible connector chute and into the pharma process bottle.

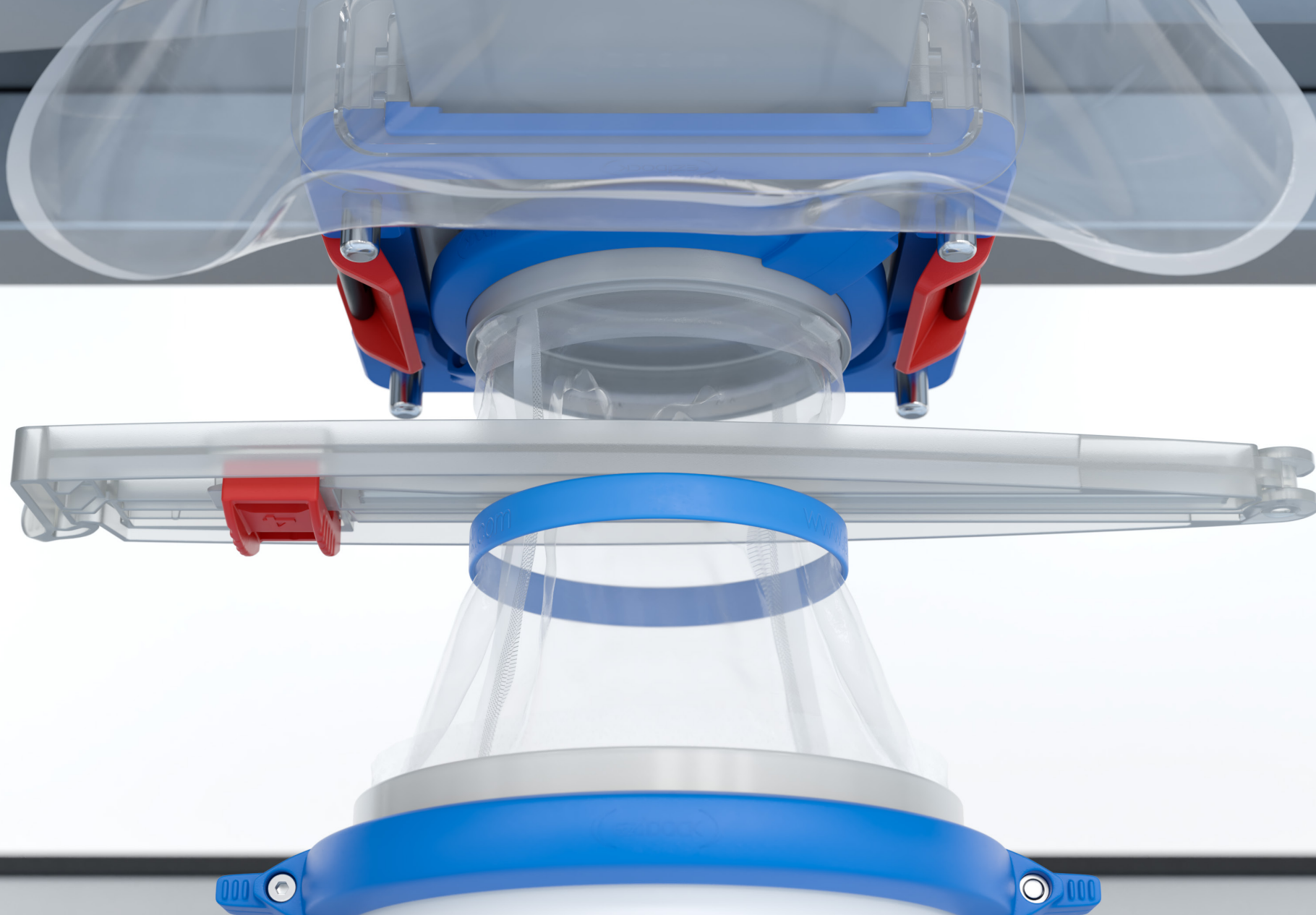
EZI-DOCK SYSTEMS LTD
Ezi-Flow CSV
Isolator Bottle Filling



11:

When filling is complete, remove the funnel and replace the blanking cap.

EZI-DOCK SYSTEMS LTD
Ezi-Flow CSV
Isolator Bottle Filling



12:

Before removing the bottle/ flexible connector chute, first use the Ezi-Grip single use bag clamp to seal off the flexible connector chute. Be sure to position the clamp in the clean area, between the passive and the filling band.

⚠ Ensure the bag clamp is orientated with the red toggle facing downwards and to the left. This is an important step and best working practice when using the system.

EZI-DOCK SYSTEMS LTD

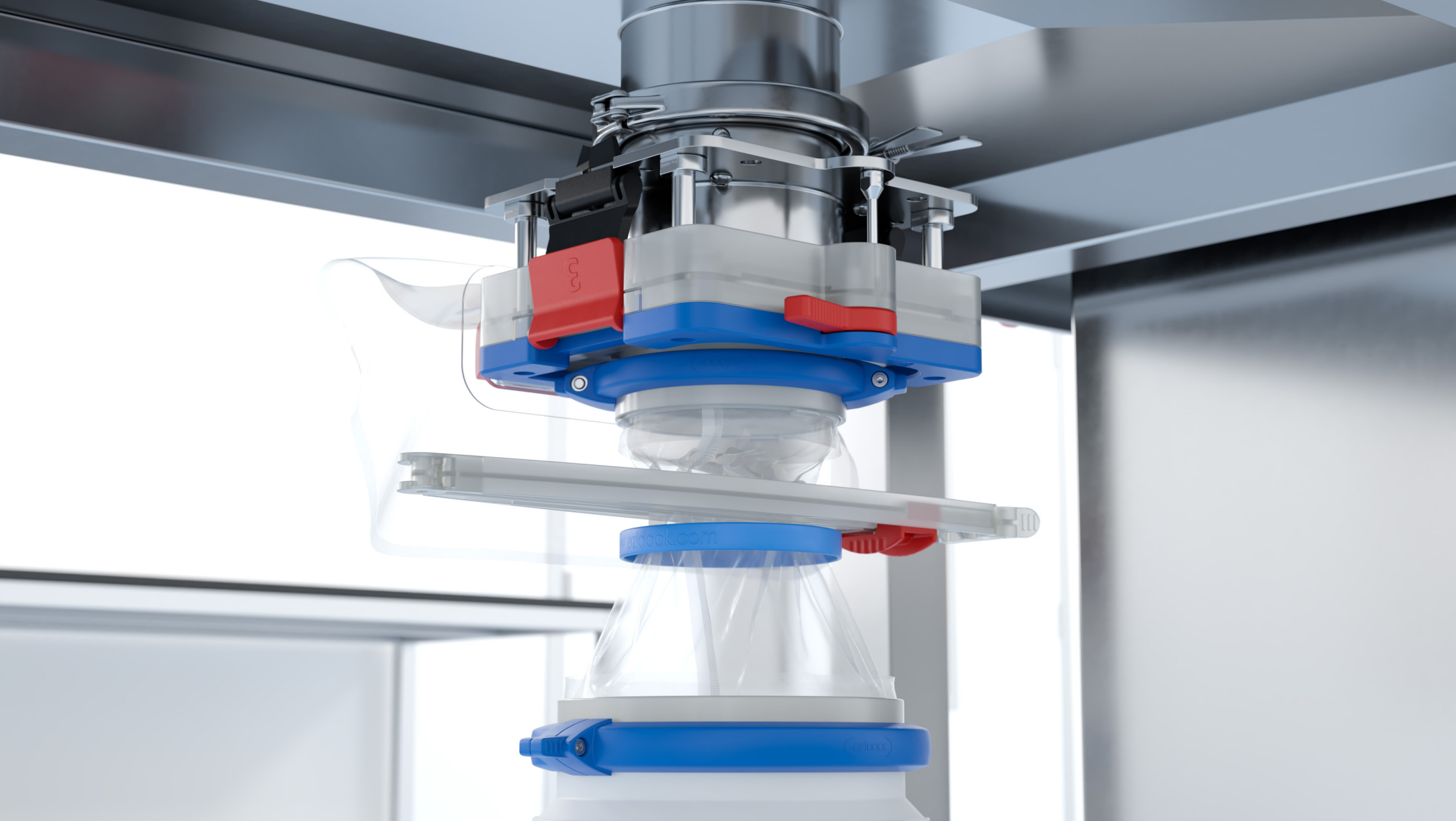
Ezi-Flow CSV
Isolator Bottle Filling



13:

Having created a complete seal by ensuring the bag clamp is fully closed, unlock the passive by reversing the docking procedure.

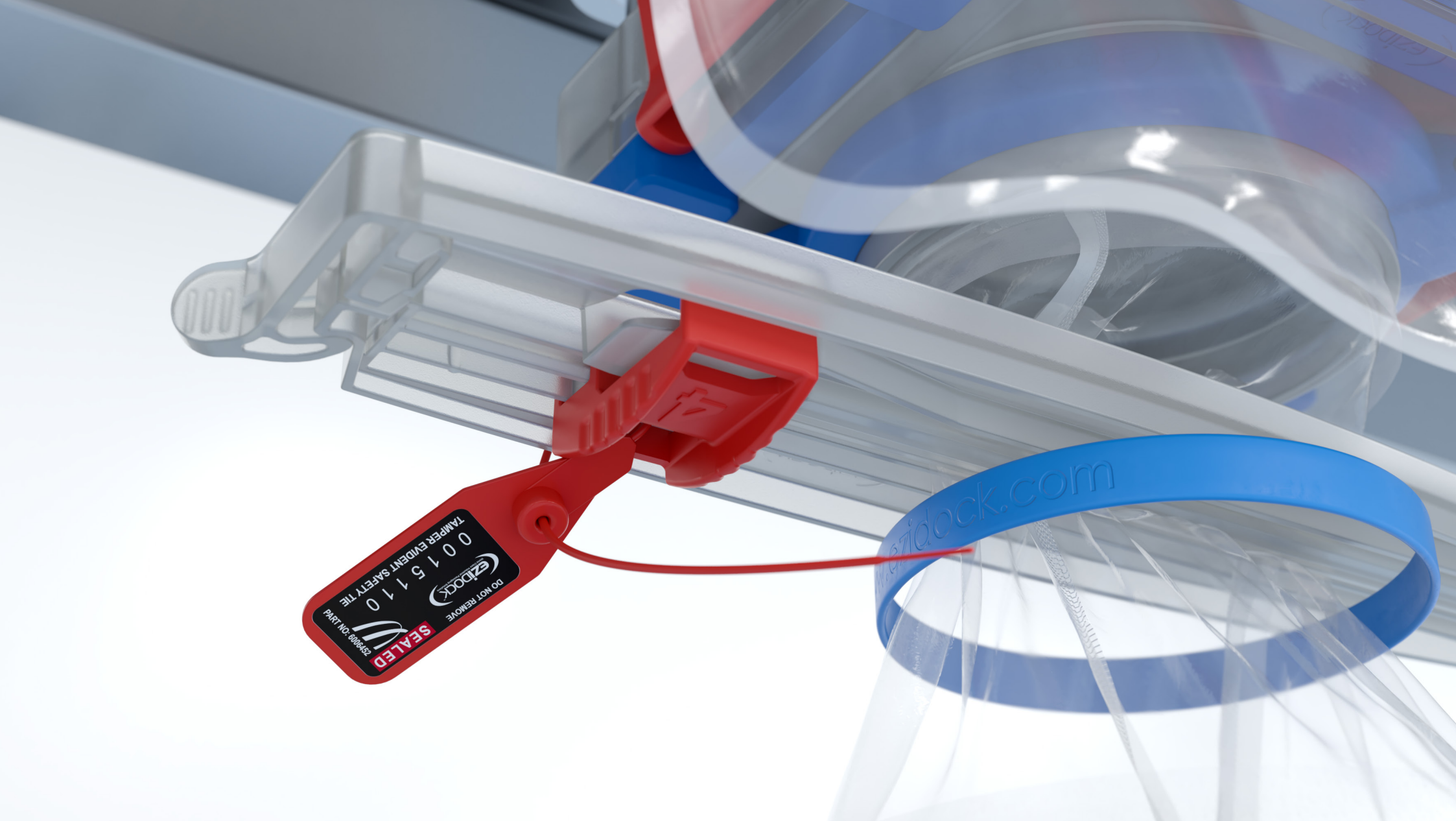
EZI-DOCK SYSTEMS LTD
Ezi-Flow CSV
Isolator Bottle Filling



14:

Raise the two red side toggles marked number 3, push in the red handle marked number 2 and finally turn the rear red toggle, marked 1. Care should be taken not to allow the flexible connector chute to fall when this final toggle is turned.

EZI-DOCK SYSTEMS LTD
Ezi-Flow CSV
Isolator Bottle Filling



15:

As an added safety feature, you can now insert the tamper evident security tag through the bag clamp handle. This will prevent accidental release of the clamp. The filling procedure is now complete.

EZI-DOCK SYSTEMS LTD
Ezi-Flow CSV
Isolator Bottle Filling



THE QUEEN'S AWARDS
FOR ENTERPRISE:
INNOVATION
2014



THE QUEEN'S AWARDS
FOR ENTERPRISE:
INNOVATION
2015



THE QUEEN'S AWARDS
FOR ENTERPRISE:
INNOVATION
2019

Ezi-Dock Systems Limited

Park Court, Park Lane Business Park, Kirkby in Ashfield,
Notts NG17 9GU United Kingdom

 Tel: **+ 44 (0) 1623 888 000**

 Email: **sales@ezidock.com**

 Web: **www.ezidock.com**